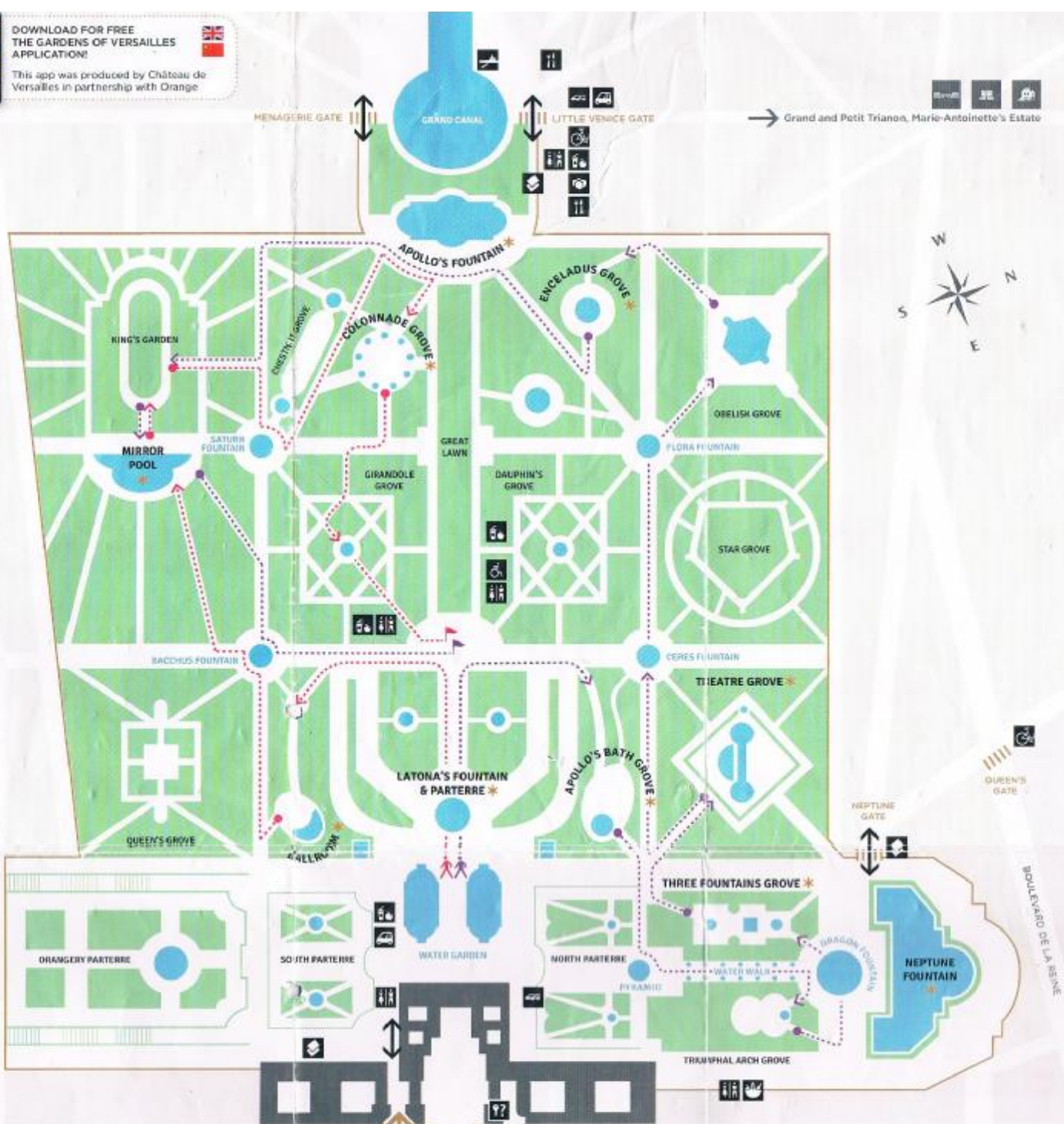




DOWNLOAD FOR FREE THE GARDENS OF VERSAILLES APPLICATION!
 This app was produced by Château de Versailles in partnership with Orange



Grand and Petit Trianon, Marie-Antoinette's Estate



FOUNTAINS WATER DISPLAYS MORNING

11am - 12am
 Grand perspective:
 Water Garden
 Latona's Fountain
 Apollo's Fountain

11:15am - 11:45am
 Orangery Parterre
 Ballroom
 Bacchus Fountain
 Saturn Fountain
 Chestnut Grove
 Colonnade Grove
 Girandole Grove

GROVES & FOUNTAINS * not to be missed!

SUGGESTED WALKS

Morning walk

IN THE GARDENS TODAY
 Groves exceptionally open from 9am to 6:30pm
 Musical display from 10am to 6:30pm

FOUNTAINS WATER DISPLAYS - ALL DAY

10am - 6:30pm
 Every 10 minutes: Mirror Pool
 Every 15 minutes: Theatre Grove

Water display on garden schedules may change. Please see information at the Garden's entrances or in our website.

NOTICE TO VISITORS

Keep your ticket with you and show it at control points.
 No picnics are allowed inside the savings area, except

FOUNTAINS WATER DISPLAYS AFTERNOON

14h30 - 16h
 Grand perspective
 Pyramid
 Water walk
 Triumphal Arch Grove
 Dragon Fountain
 Three Fountains Grove
 Apollo's Bath Grove
 Dauphin's Grove
 Ceres Fountain
 Flora Fountain
 Obelisk Grove
 Enceladus Grove

- Musical fountains show ticket office
- Information Chateau de Versailles ticket office
- Entrance / Exit
- Electric cars
- Lost and found
- Restaurants
- Snacks
- Souvenirs / Book shop